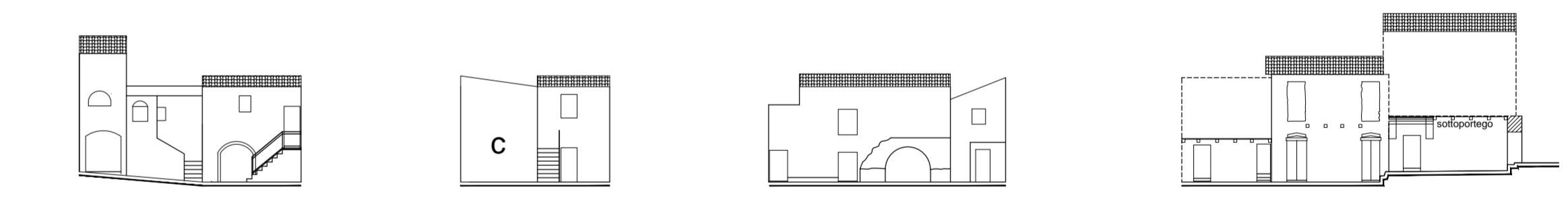
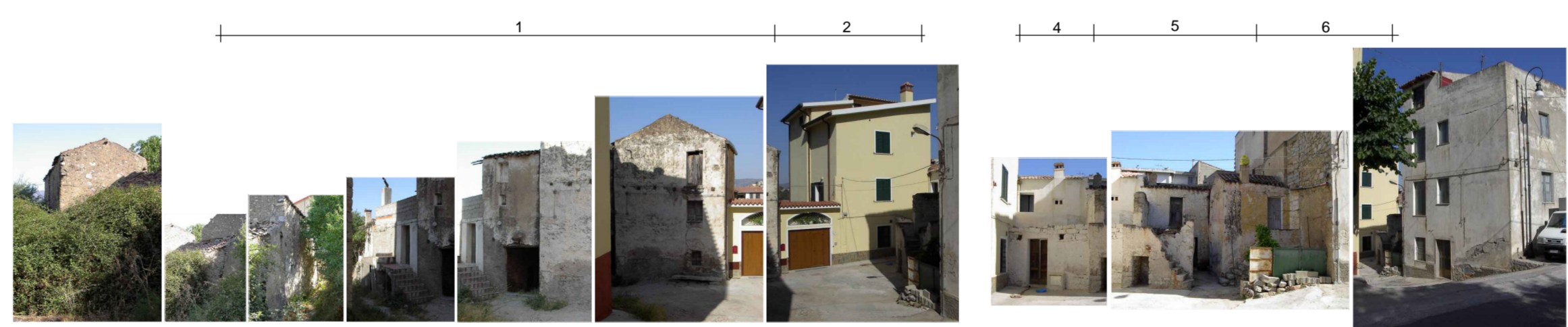
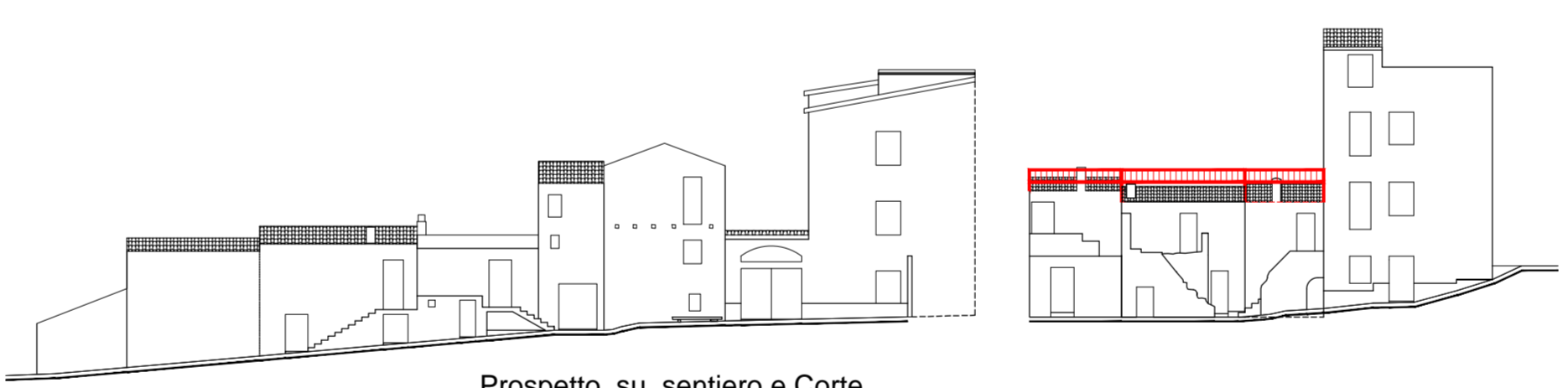
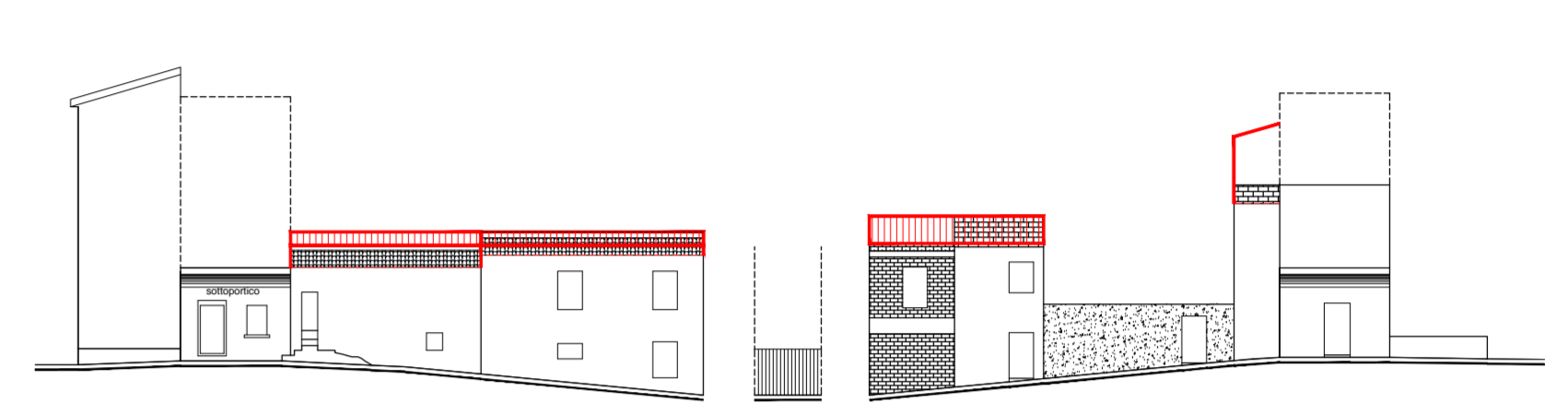
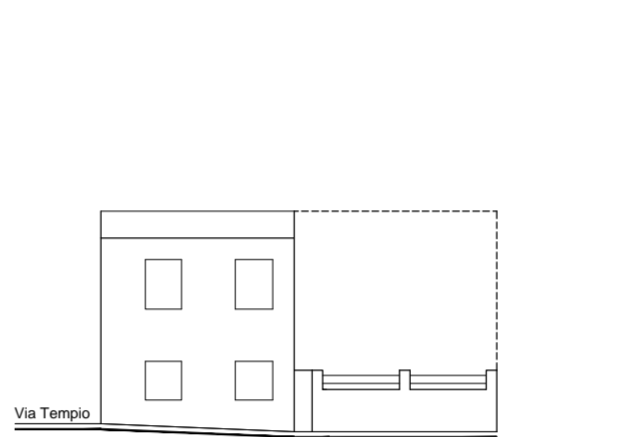
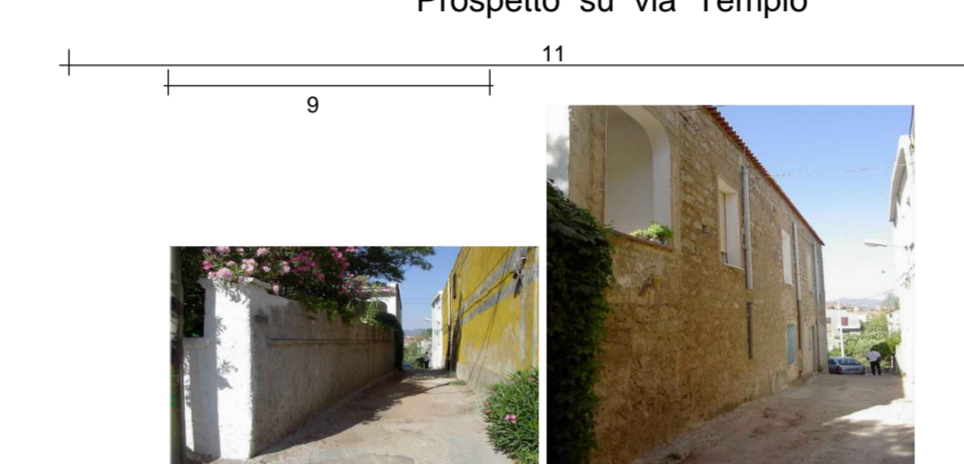
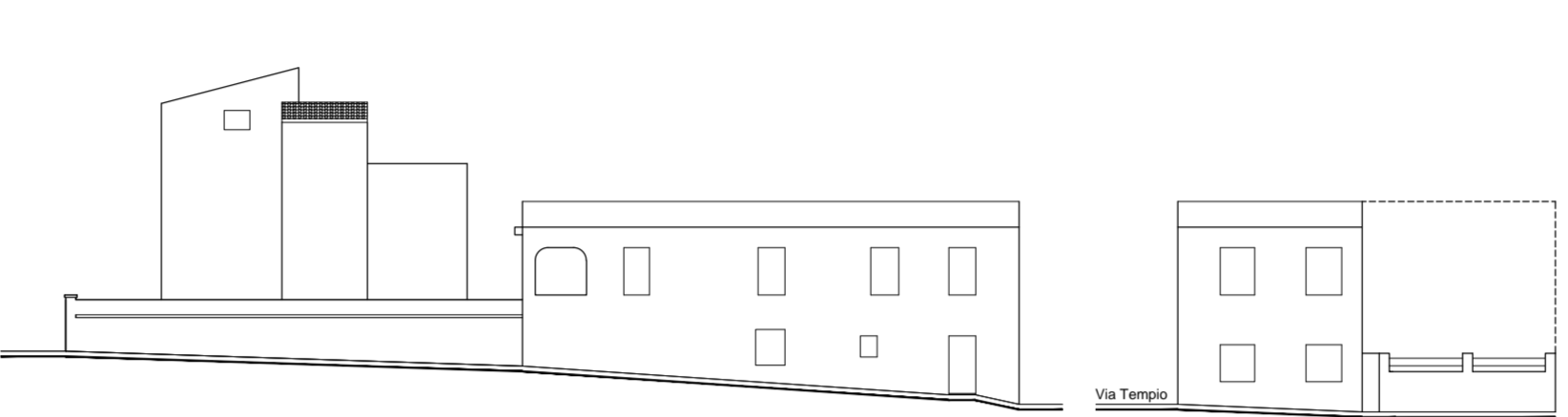
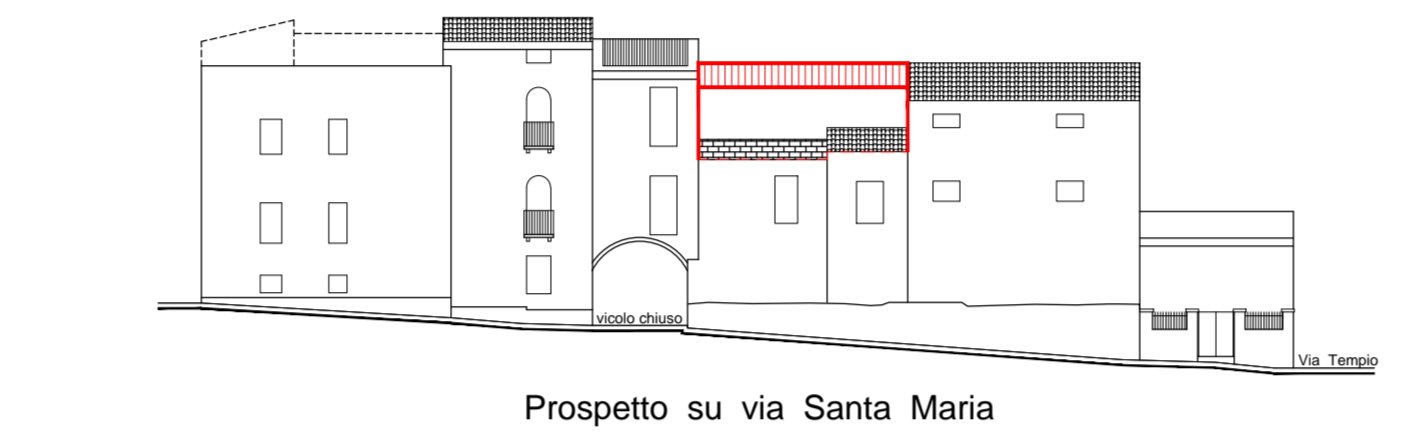
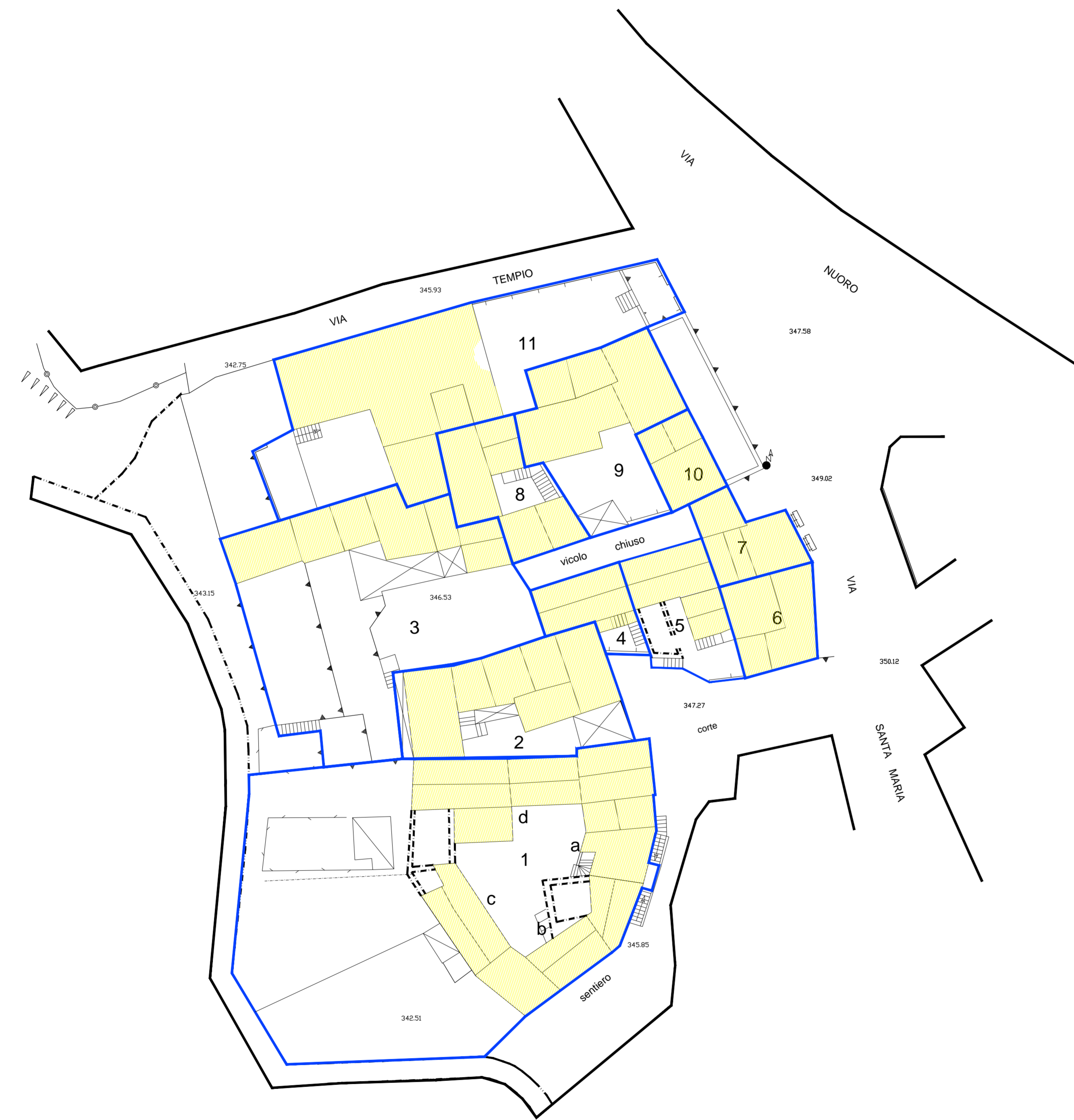


**LEGENDA**

- 4 UNITA' EDILIZIA
- RUDERE
- CHIESA
- NUOVA EDIFICAZIONE  
AMPLIAMENTO
- NUOVA COPERTURA A TETTO
- DEMOLIZIONE
- DEMOLIZIONE CON  
RICOSTRUZIONE



**COMUNE DI OLIENA  
(PROVINCIA DI NUORO)**

**PIANO ATTUATIVO DI ISOLATO**

ISOLATI n° 03 - 06 - 08 - 11 - 12 - 17 - 18 - 22 - 23 - 29 - 39  
41 - 42 - 43 - 47 - 57 - 71 - 74 - 77 - 80 - 92

**ISOLATO n.° 22**

**PROGETTISTA:**  
Dot. Ing. Giovanni Mira

**COLLABORATORE:**  
Dot. arch. Elena Botta  
Dot. arch. Francesco G. Sanna  
Geom. Marco Cossu  
Geom. Maurizio Merga

**IL SINDACO:**  
Dot. Salvatore Fede

**IL RESPONSABILE DEL PROCEDIMENTO:**  
Dot. Arch. Franco Niffi

**ANALISI DEL TESSUTO EDILIZIO ESISTENTE -  
PROPOSTA PROGETTUALE**  
Unità edilizie e profili stradali

Scala: 1:200

STUDIO ASSOCIATO MIRA - TOMASELLO	
Nome	02/08/2002
Indirizzo	02100 OLIVIA
Telefono	0785/21000
Fax	0785/21000
Web	www.studioassociatomira.com
Aut. Min. 1/2000	02/08/2002
Aut. Min. 2/2000	02/08/2002
Aut. Min. 3/2000	02/08/2002
Aut. Min. 4/2000	02/08/2002
Aut. Min. 5/2000	02/08/2002
Aut. Min. 6/2000	02/08/2002
Aut. Min. 7/2000	02/08/2002
Aut. Min. 8/2000	02/08/2002
Aut. Min. 9/2000	02/08/2002
Aut. Min. 10/2000	02/08/2002